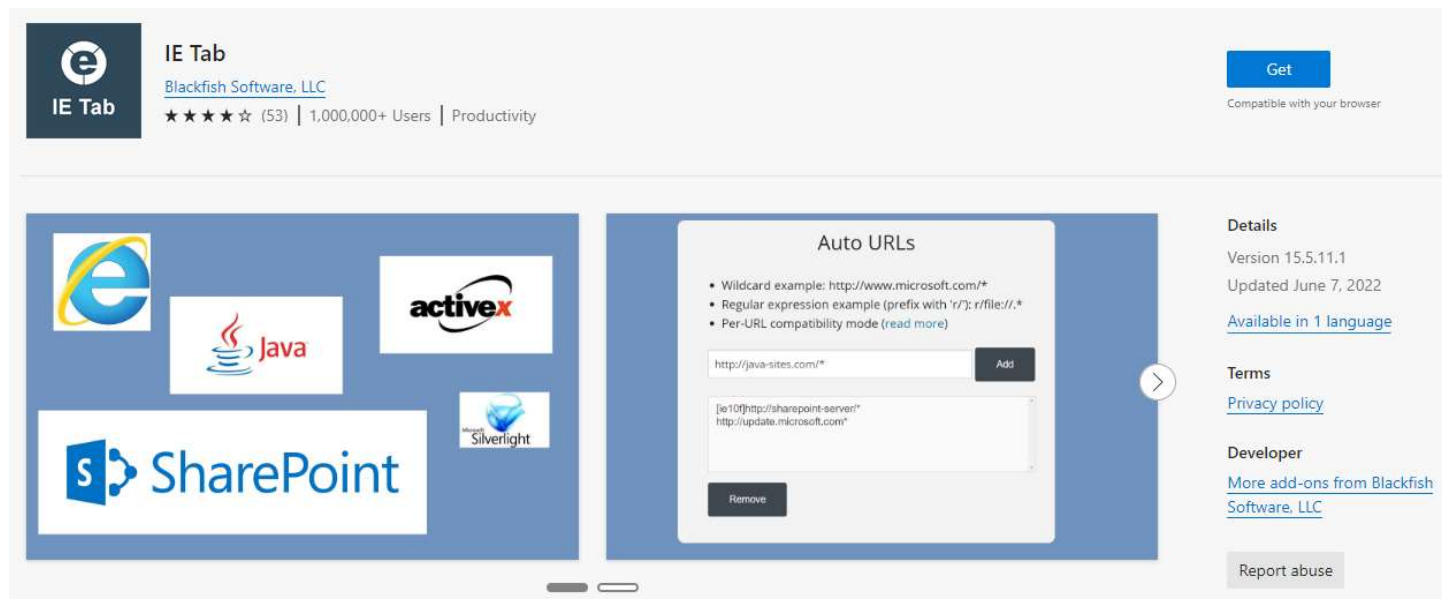


MS Edge - IETAB

Step 1: Go to the following site using MS Edge to add an extension:

<https://microsoftedge.microsoft.com/addons/detail/ie-tab/npjkkakdacjaihjaelioacmecofghagh>



Step 2: A new tab will open, close it. On the top right of MS Edge click the extensions button (first one on the left), puzzle icon to pin it



Step 3: Click the E icon beside the puzzle icon

A new tab will open -> A file called ietabhelper.exe will be downloaded to your computer

Click the file ietabhelper.exe and click run.



One-time installation steps

[What? Why? Frequently Asked Questions](#)

(Enterprise customers: Contact us at support@ietab.net for automatic deployment options)

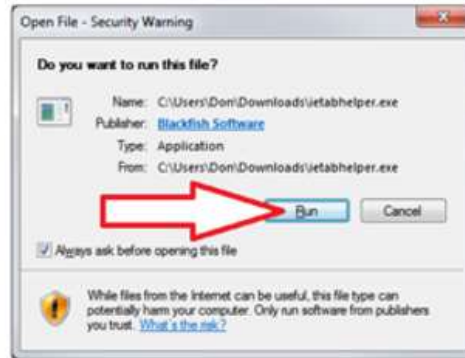
Step 1

Click on the ietabhelper.exe below the flashing arrow to launch the IE Tab Helper installer.



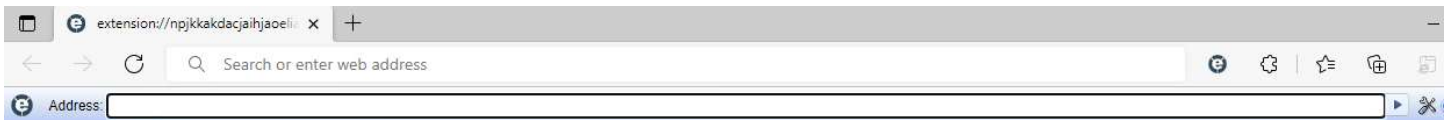
Step 2

Click on "Run" to run the helper installer:



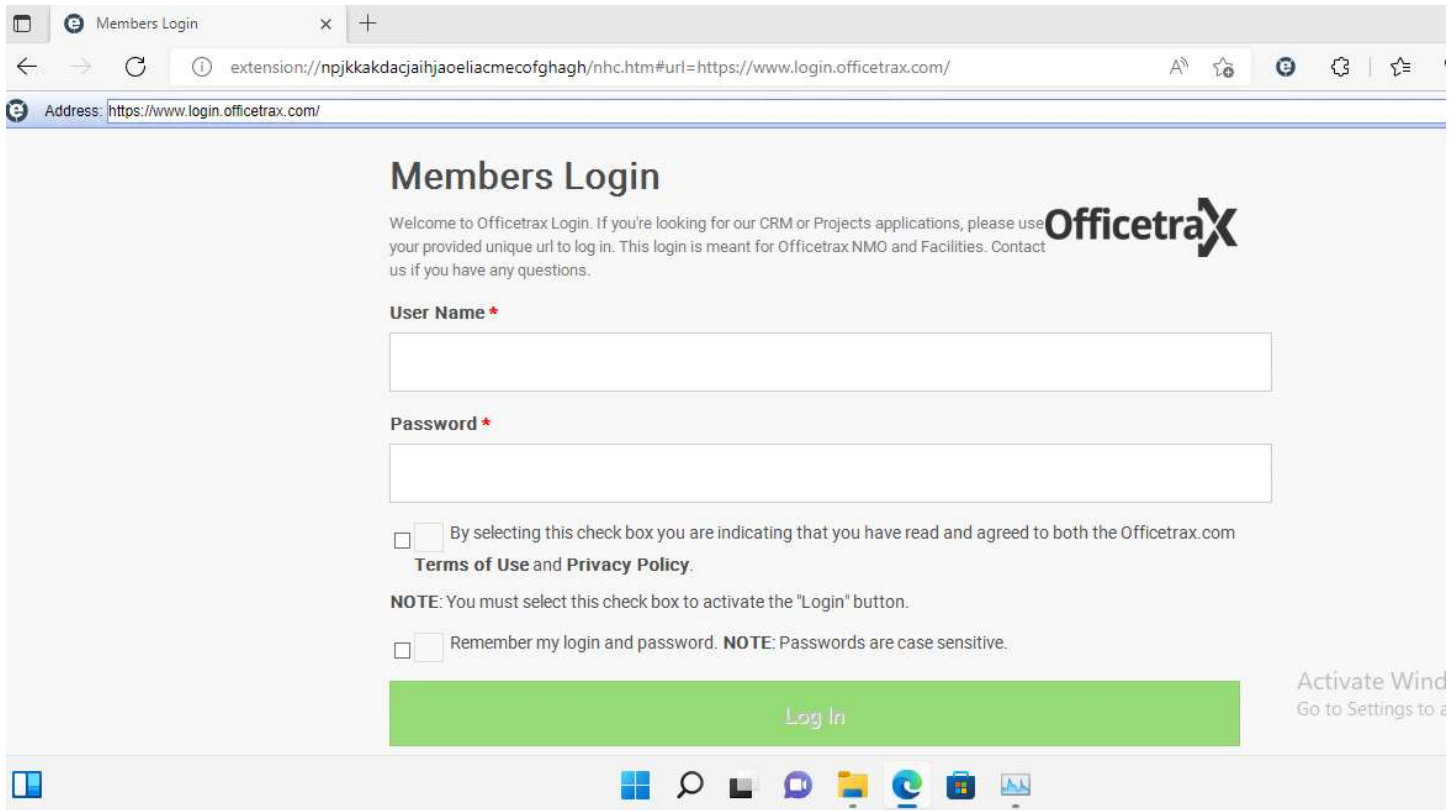
Tout afficher

Step 4: IETAB will now launch inside chrome, you can see an additional address bar is available for you to use (blue address bar).



Enter your URL here





IETAB must be licensed for commercial/enterprise use, a license can be obtained per user for your organization to use this software appropriately. Any licensing of this software is between your organization and IETAB. Core7 Technologies has no affiliation with this software and its licensing requirements.

<https://www.ietab.net/pricing>

The information above provided by Core7 Technologies is for general informational purposes only, all information provided above is given in good faith, however we make no representation of IETAB or warranty of any kind of the use of this software. Under no circumstances shall we have any liability to you for any loss or damage of any kind incurred as a result of the use of IETAB. Your use of this software (IETAB) is solely at your own risk. Any support for this software must be provided by its author

<https://www.ietab.net/>